

# Meeting environmental needs

Upgrading the Princes Highway



The Roads and Traffic Authority (RTA) is committed to avoiding or minimising the potential effects of Princes Highway upgrading projects on the environment. The RTA develops its projects to firstly avoid impacting on the environment, and where impacts cannot be avoided it uses environmental management tools to reduce impacts. This fact sheet explains those measures.



Koala using an underpass at Karuah Bypass, Pacific Highway

Environmental assessment and community consultation help to determine the scope and shape of highway upgrading projects before construction begins. Some of the RTA's environmental assessment and management processes are outlined below.

## Environmental assessment

The RTA ensures that any potential environmental impact is managed according to current State and Federal environmental legislation.

Environmental studies investigate and assess the possible result of proposed works on:

- Flora and fauna, including habitats.
- Aquatic ecology.
- Noise and vibration.

- Air and water quality.
- Hydrology, drainage and flooding.
- Geology/soils.
- Cultural heritage (Indigenous and non-indigenous).
- Property and land use.
- Local community and businesses.
- Traffic and transport.
- Visual quality and landscape character.

The RTA prepares an environmental assessment for the project as required by the Environmental Planning and Assessment (EP&A) Act, the Environmental Protection and Biodiversity and Conservation (EP&BC) Act and the RTA's own guidelines.

When preparing an environmental assessment, the RTA liaises with various organisations, including State Government agencies, local government, the community and other groups or individuals as appropriate.



Rockfill keeping Waldron's Swamp clean, Mogo to Moruya widening

## Community involvement

Community involvement ensures effective planning and decision making. It provides important information on RTA road development and maintenance proposals and helps to identify major issues and possible community concerns.

The RTA works to create interest and awareness in options and proposals to provide opportunities for the community to be involved in contributing to decisions that affect them.

The RTA seeks community involvement through activities such as community information evenings and workshops, community focus or liaison groups, media announcements, letterbox drops, site open days, advisory committees, newsletters and questionnaires.

Community consultation occurs in the early planning stages of Princes Highway upgrades and may form part of the RTA's overall environmental management strategy.

Documents are placed on exhibition for public information and comment. Issues raised in submissions from the community are considered when making a decision on a project.



## Environmental management

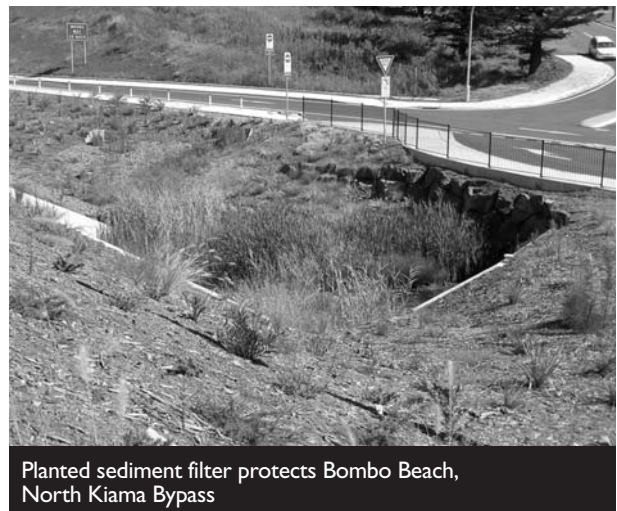
The RTA uses a range of measures to minimise impact on the environment during the construction and operation of a project. These measures include:

- Erosion and sedimentation controls.
- Heritage investigations and controls.

- Noise treatments.
- Noise, dust, air and water quality monitoring.
- In important fauna areas, fauna crossings such as combined drainage/fauna structures, fauna underpasses, fauna exclusion fencing.
- Revegetation with (local) native species.



A construction environmental management plan or other environmental plans are prepared for each Princes Highway upgrading project. The plan describes how to implement measures to protect the environment and how the conditions of approval identified during the environmental assessment will be met.



For further information, please contact the Roads and Traffic Authority, Southern Regional Office on telephone: 02 4221 2583.